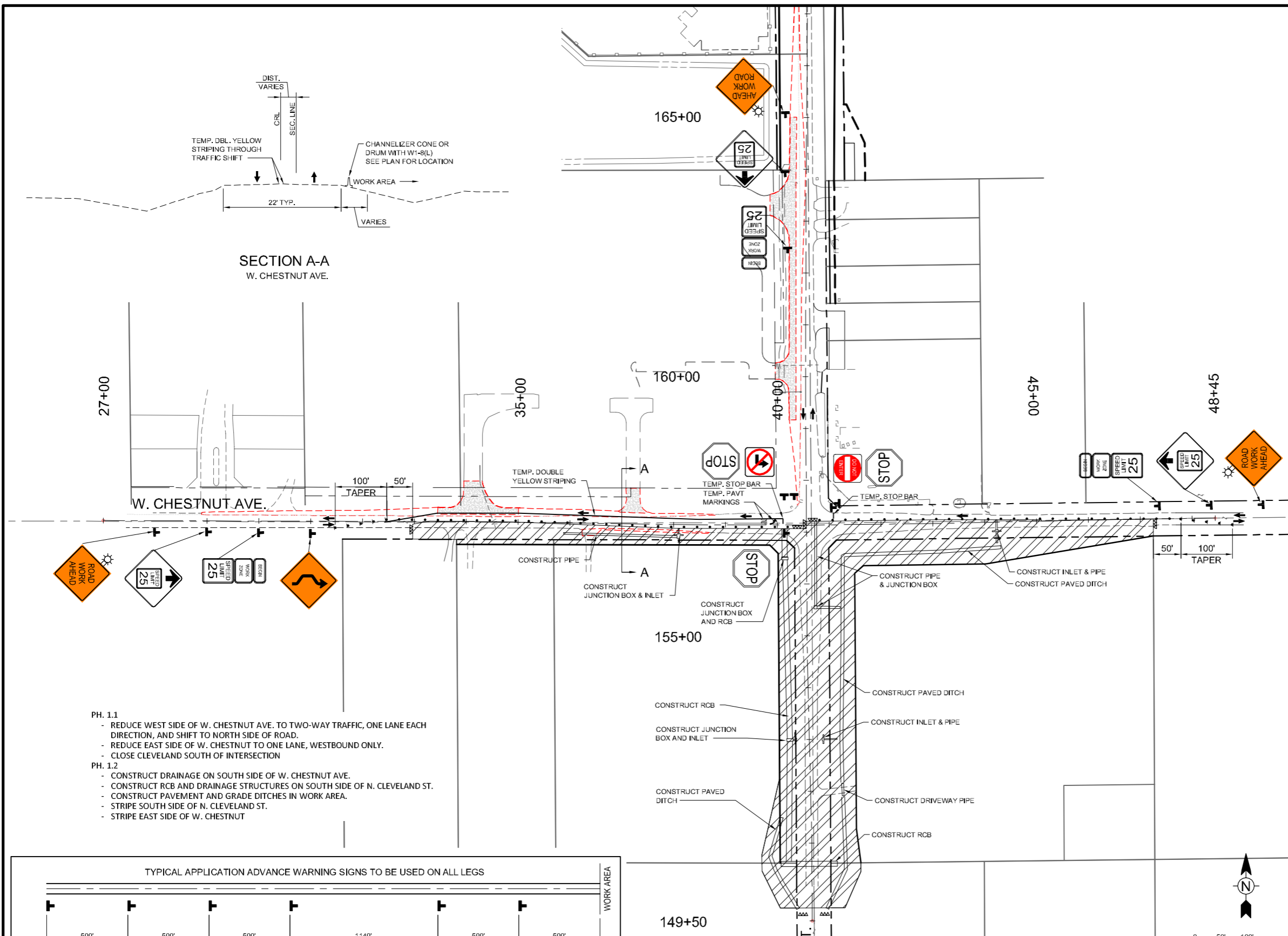


OKLAHOMA DEPARTMENT OF TRANSPORTATION					
FED. ROAD DIST. NO.	STATE	STATE JOB NO.	FISCAL YEAR	SHEET NO.	TOTAL SHEETS
4	OKLA	17020(05)		23	
DESCRIPTION		REVISIONS		DATE	

SECTION A-A
W. CHESTNUT AVE.

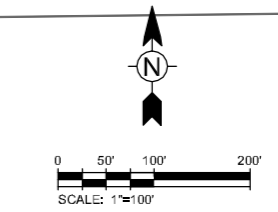
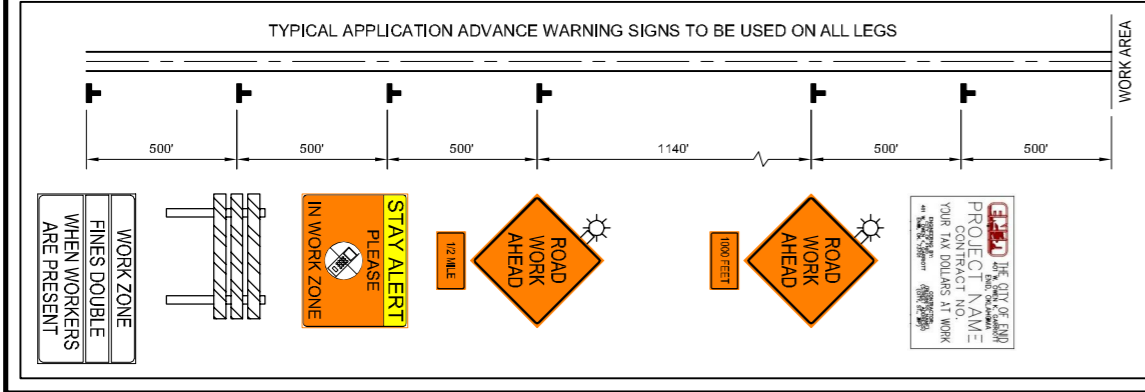


- NOTES:**
- REMOVE PERMANENT PAVEMENT MARKINGS OR TEMPORARY PAVEMENT MARKINGS FROM PREVIOUS PHASES THROUGH TRAFFIC PATTERN SHIFT AREAS THAT CONFLICT WITH THE PROPOSED PHASE PAVEMENT MARKINGS.
 - REFERENCE ODOT TRAFFIC CONTROL STANDARDS TCS1-1, TCS2-1, TCS3-1, TCS4-1, TCS5-1, TCS6-1, AND ROADWAY DESIGN STANDARD PDT-1.
 - WHERE WORK OCCURS IN CLOSE PROXIMITY TO TRAFFIC, UTILIZE THE 2009 MUTCD FIG. 6H-10 FOR "LANE CLOSURE ON A TWO-LANE ROAD USING FLAGGERS (TA-10)" DURING OFF-PEAK DAYLIGHT HOURS AS NEEDED.
 - CONTRACTOR TO COORDINATE WITH CITY FOR ANY TRAFFIC SIGNAL CONTROL ADJUSTMENTS NEEDED DUE TO TEMPORARY TRAFFIC SHIFTS THROUGH INTERSECTION.
 - SEE ODOT TRAFFIC CONTROL STANDARD TCS21-1 FOR CONSTRUCTION ZONE PAVEMENT MARKING.
 - CONSTRUCT ALL PROPOSED DRAINAGE STRUCTURES WITHIN THE WORK AREAS UNLESS NOTED OTHERWISE.
 - USE PORTABLE LONGITUDINAL BARRIER AS NEEDED WHEN CONSTRUCTING DRAINAGE CROSSING STRUCTURES WITH APPROPRIATE FLARES TO PLACE ENDS OUT OF THE CLEAR ZONE. (SEE ODOT STDS. TCS2-1, TCS24-1, AND TCS25-1.) THE PRICE BID FOR LONGITUDINAL BARRIERS TO BE INCLUDED IN OTHER ITEMS. MAINTAIN STREET ACCESS TO BOTH SOUTH AND WEST SIDES OF THE GAS STATION AT ALL TIMES.

- PH. 1.1**
- REDUCE WEST SIDE OF W. CHESTNUT AVE. TO TWO-WAY TRAFFIC, ONE LANE EACH DIRECTION, AND SHIFT TO NORTH SIDE OF ROAD.
 - REDUCE EAST SIDE OF W. CHESTNUT TO ONE LANE, WESTBOUND ONLY.
 - CLOSE CLEVELAND SOUTH OF INTERSECTION
- PH. 1.2**
- CONSTRUCT DRAINAGE ON SOUTH SIDE OF W. CHESTNUT AVE.
 - CONSTRUCT RCB AND DRAINAGE STRUCTURES ON SOUTH SIDE OF N. CLEVELAND ST.
 - CONSTRUCT PAVEMENT AND GRADE DITCHES IN WORK AREA.
 - STRIPE SOUTH SIDE OF N. CLEVELAND ST.
 - STRIPE EAST SIDE OF W. CHESTNUT

LEGEND

- WORK COMPLETED PREVIOUS PHASE
- WORK AREA
- TYPE III BARRICADE w/ TYPE "A" WARNING LIGHTS R11-2 (LANE)
- DRUMS
- DRUMS w/ W1-8(L)
- CHANNELIZING CONE
- SIGNAGE
- DIRECTION OF TRAVEL



DESIGN	Tt
DRAWN	AKR
CHECKED	TT
APPROVED	DNP
SQUAD	Tt

OKLAHOMA DEPARTMENT OF TRANSPORTATION

TCP-SEQUENCE OF CONSTRUCTION PHASE 1

STATE JOB NO. 17020(05)

SHEET NO. 23

CONTRACTOR SHALL MAINTAIN ACCESS TO ALL BUSINESSES AND DRIVEWAYS

4/21/2017 3:58:46 PM - P:\2771\21\131\2771-2\300\1\CAD\SHHEET\FILES\CONSTR\SEQ-PH1A.DWG - SCHUMACHER, MIKE